



KEWATEC
SHIPYARDS

Work 1000-3

*A customized vessel for
fire fighting, rescue and
intervention*



Work 1000-3

Fire fighting- and rescue vessels is truly one of our specialities. Fire fighting- and rescue vessels has to be ready to move and perform when the alarm goes. Therefore each vessel is optimized for the required and specified tasks, whether they be either firefighting, diving and rescue support, emergency towing, equipment transport to islands, oil spill response or any other hard work duty that is expected from the fire brigades.

This means reliable boats which can move safely and fast to the scene of operation and systems that works flawlessly in any circumstance, even in icy conditions.

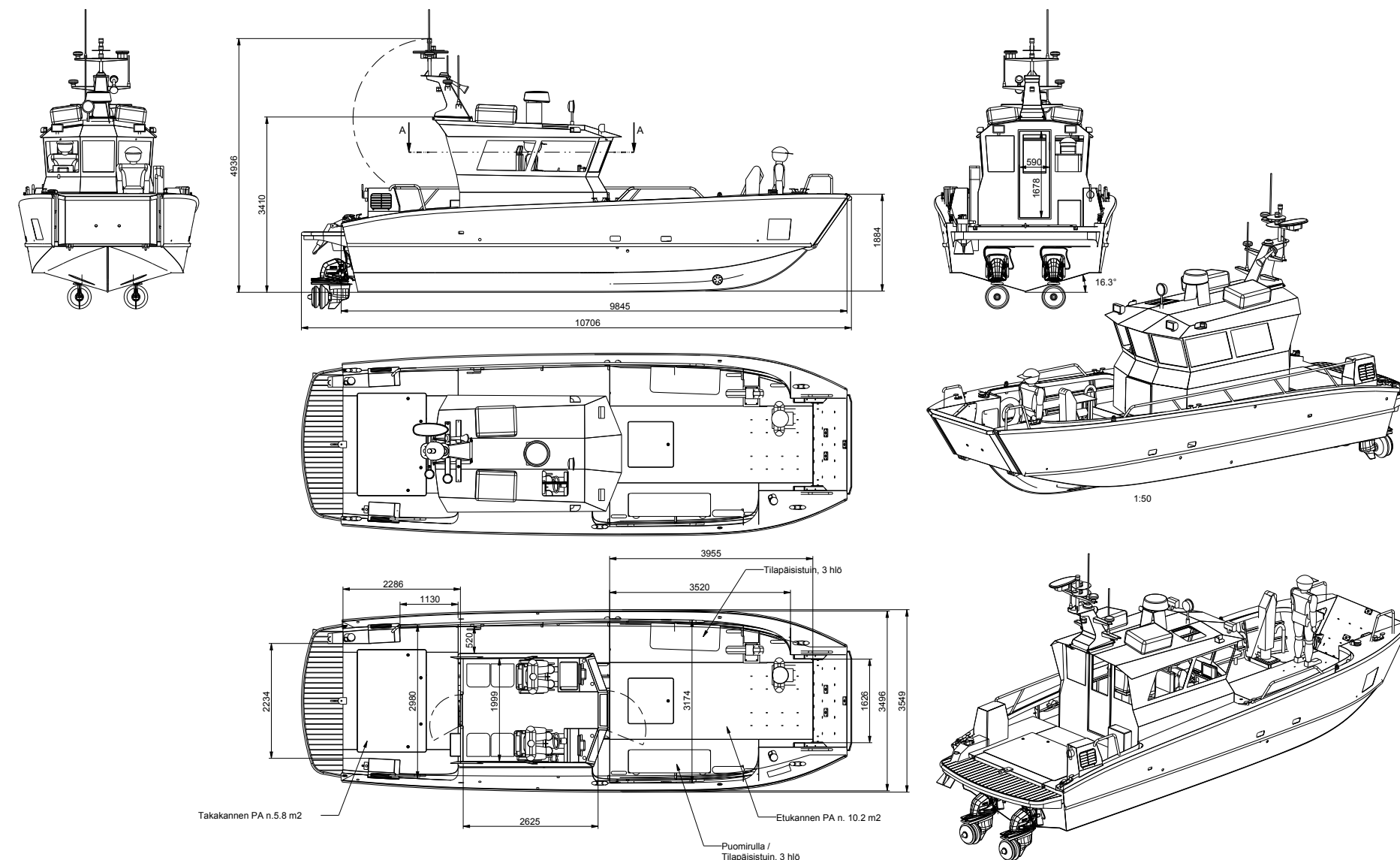
Watch the video:



Main Dimensions:

APPLICATION	Fire Fighting & Oil Recovery Defence & Security
LENGTH	10,6 M
BEAM	3,5 M
DISPLACEMENT	7,3 T
ENGINE Range	2 X 250 - 350 HP
FUEL	540 L
SPEED Range	30 - 40 KN
DRAFT	0,58 M

This boat is made with the following propulsions. However, each boat is customized according to customer requirements.



We design and build each individual boat to the customers specifications with all systems included such as eg. firepumps and fire monitors. The fire fighting vessels typically also comprises complex hydraulic systems and control systems, which we naturally include in our deliveries.

Available firefighting vessel designs for immediate production in sizes 8-18 meters.



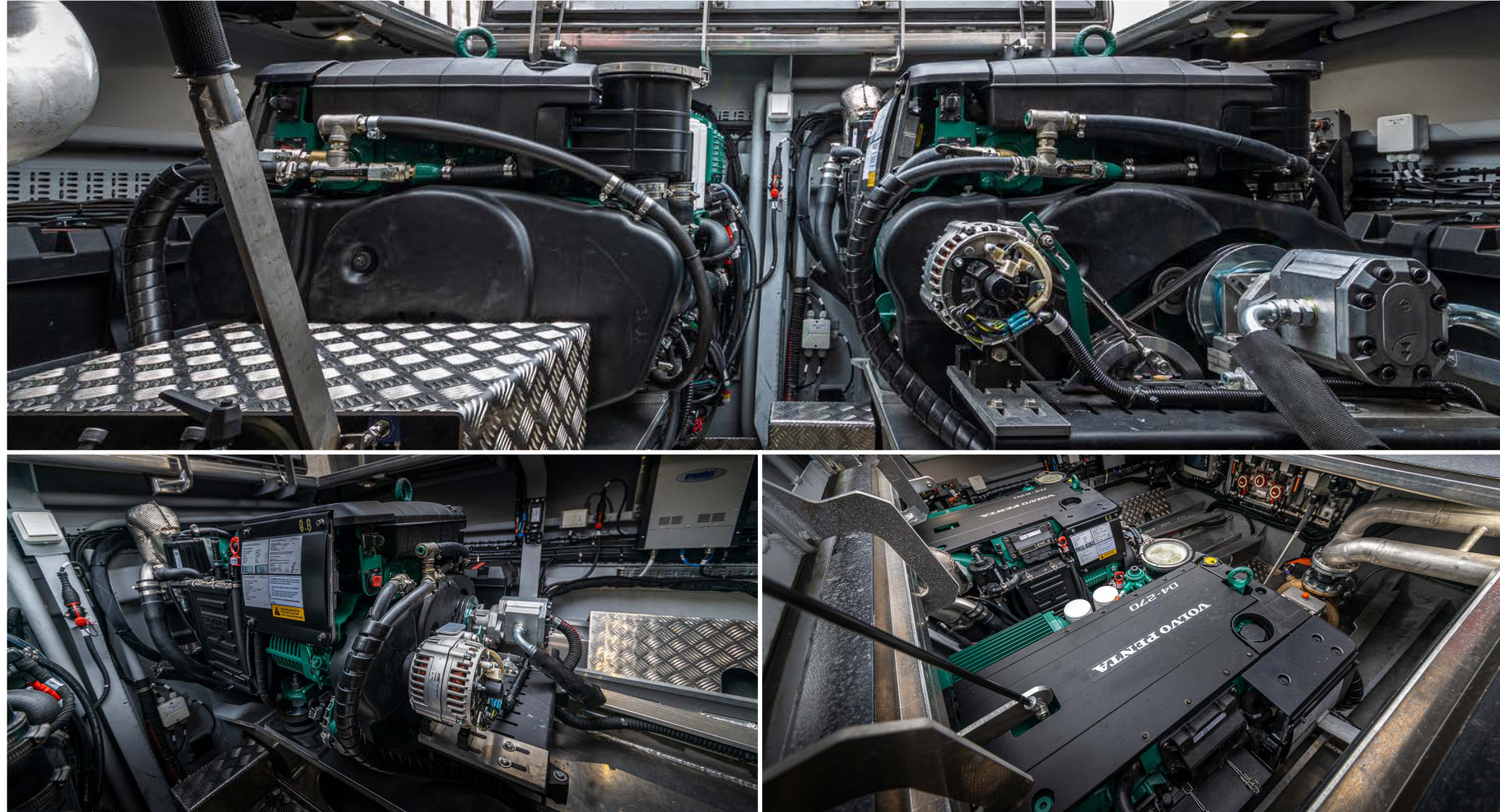
Cabin

Wide, bright and a full 360° view from the cabin



Main engines

- 2x Volvo D4 270 dpi
- Optional machinery available on request



Storage

Storage under the front deck and the cabin



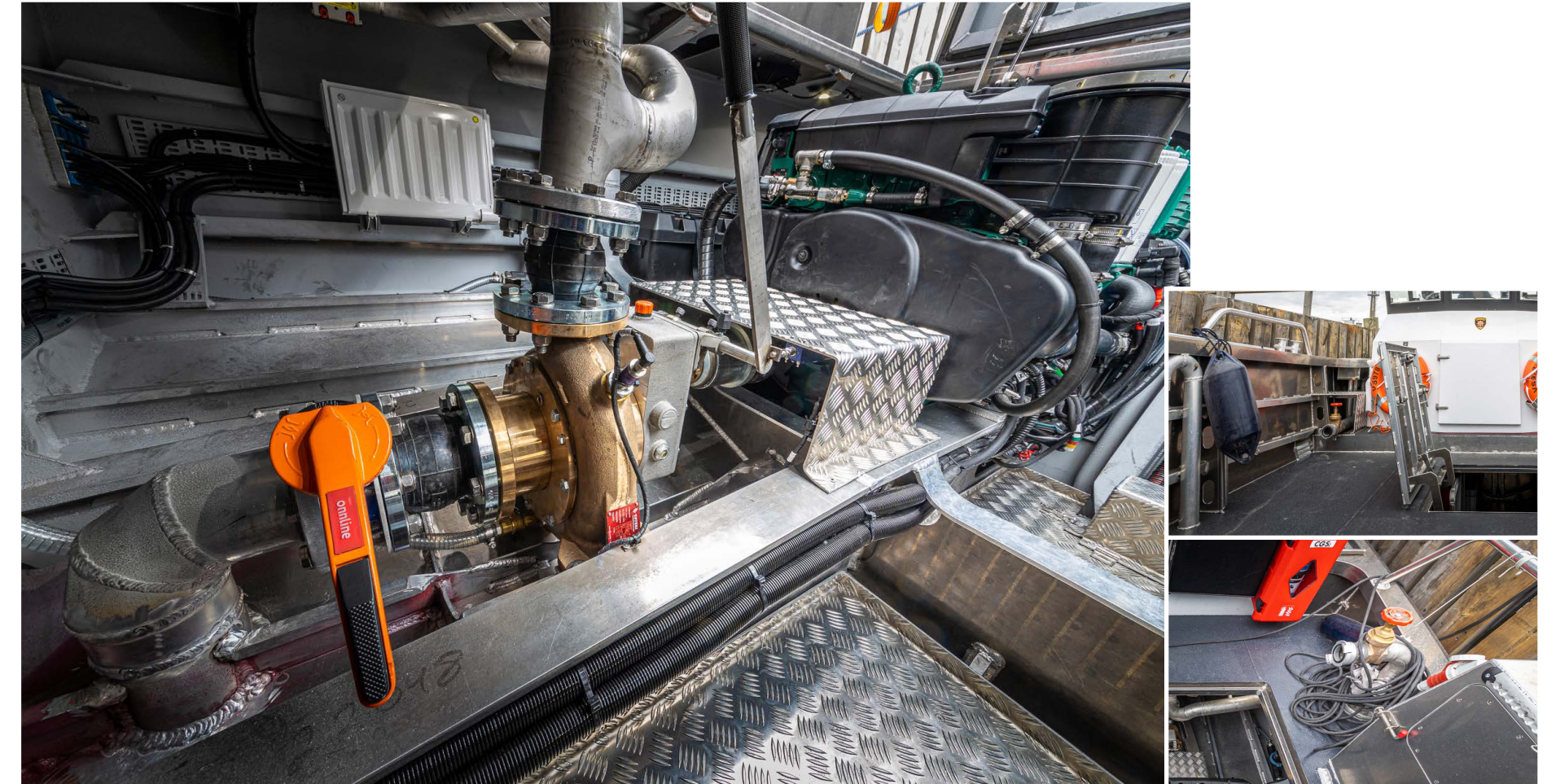
Electrical distribution

- 24 VDC consumer/start circuits
- Shore power 230 VAC
- Generator option



Fire Fighting

- The fire pipes goes both to the front and aft deck
- Fire pump connected to main engine
- Optional: dedicated fire pump engine
- Customized solutions for fire lines and monitors





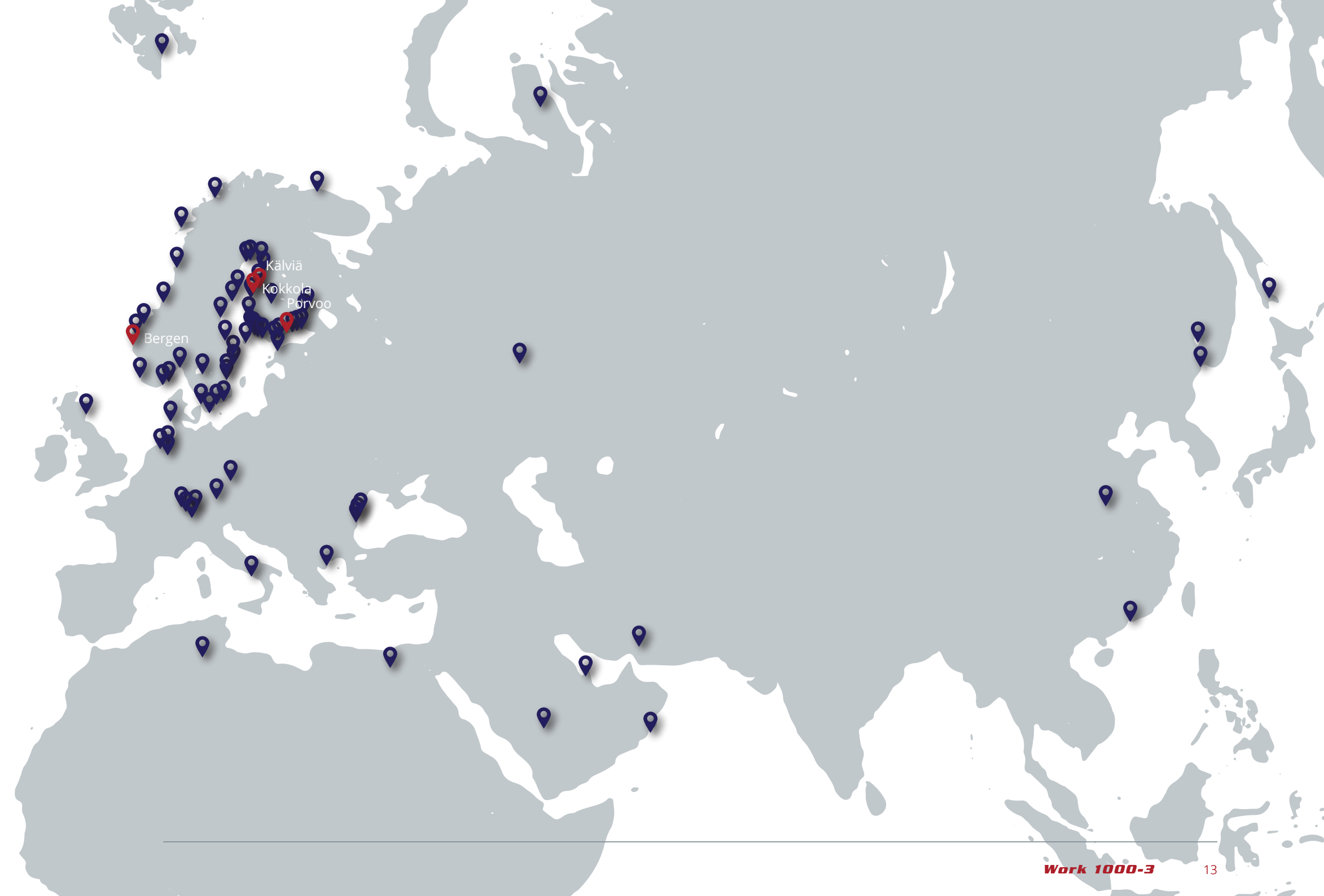
Locations and deliveries

Kewatec is headquartered in Kokkola and has operations in Porvoo, Bergen and Kälviä. In Kälviä, near Kokkola, Kewatec manufactures hulls for aluminum boats.

Kewatec's facilities are strategically selected, based on the sea to do launching and boat testing as convenient as possible. In Porvoo, the facilities are optimal for the production of boats over 25 m.

Items marked in red are our location.

We have delivered almost 800 professional boats to various authorities and on the map next in blue you will see a few places where we have delivered our boats.







Oy Kewatec AluBoat Ab

Kokkola

*Isokarintie 1
FI-67900 Kokkola*

Porvoo

*Tolkkisten satamatie 5
FI-06750 Porvoo*

Bergen

*Martec AS, Sjødalsvegen 20
NO-5305 Florvåg*

*+358 (0) 207 780 660
sales@kewatec.fi*

*Business ID:
FI19884459*

www.kewatec.fi